



## Model CQD20-D

### DELUXE SERIES REACH TRUCK

CQD20-D adopts the new design concept, the whole truck shape is simple and clear, the line is full and smooth, fitful with public aesthetics.

Believe this model can bring you special, most comfortable and deluxe operation experience.



## ADVANTAGES :

### SAFE & RELIABLE :

- Height limit function: when the fork is lifted to the maximum height, the lifting motor will automatically cut off power to ensure the safety of lifting.
- High speed limit function: when the fork lifting is greater than the free lifting height, the driving speed will be automatically reduced to ensure the safety of high-level operation.
- The turning speed limit function automatically reduces the speed according to the turning angle when the vehicle turns, ensuring the safety of the forklift when turning.
- The mast reach speed will be slow down when the mast to the end, in order to ensure the stability of mast.
- The service brake is operated by hydraulic braking and regenerative braking at the same time, with short braking distance, no inertial impact, safety and reliability.
- The parking brake adopts electromagnetic braking, which acts automatically after parking, and has the function of anti-sliding on the ramp.
- Equipped with OPS as standard to ensure the operator's safety.
- CANbus technology is adopted to detect the motor speed, temperature and other information in real time to realize closed-loop control.
- AC frequency conversion control technology enables stepless speed regulation control for driving, lifting and steering, which is accurate and reliable.
- Equipped with warning lights + headlights as standard to ensure safe operation under the condition of insufficient light.
- The foot pedal position is designed with an off position pedal to ensure the safety of the operator's feet.

OPTION: ASC Function(Active Sway Control)

### STANDARD :

- INMOTION controller
- Driving Motor: 6.5kW(AC)
- Lifting Motor: 8.2kW(AC)
- EPS
- Lead-acid battery 48V/550AH(side way design)
- Gear box: Germany HORSHEL
- Integral sideshifter
- Fork tilting
- High-level seat
- Imported mast material
- LED warning light & front light
- Height positioning system

### OPTIONAL :

- Camera system
- LED back lights
- Lithium battery(48V/350AH & 48V/400AH & 48V/450AH)
- Electro-magnetic operation
- Bigger capacity of lifting motor: 12kW



## WHY Deluxe Series

Break the traditional concept of "one price, one goods", so that you can enjoy the deluxe experience with reasonable price.

We spent nearly two years to design this reach truck, aiming to create an industrial vehicle with modern aesthetics and high performance.



### EPS Electric Power Steering Power on correction function

Handrails are designed on the left and right sides of the frame, which is more convenient for operators to get on and off



Adjustable seat back angle



Adjustable forward and backward distance

## Comfortable Experience

### Luxury Seats

Luxury seats are adopted, with adjustable seat back angle and adjustable seat positions, front and rear, with shock absorption function



### Finger-tip operation

- Lifting & lowering
- Fork tilting
- Integral side-shifter
- Mast reach forward & backward



### Steering

Completed steering can be adjusted to meet different operators' needs



### Imported mast material

- Imported mast material ensures residual load and reduce the shaking of the mast.
- Special mast design keeps wide and perfect view.

## Easy Maintenance



The cover can be open to ensure the maintenance easy and fast



The battery can be removed with the side-way structure to facilitate the maintenance or replacement of the battery



## ADVANCED TECHNOLOGY :



- One-click start
- USB
- Left button for some options, like the red light and blue light

- Finger-tip operation  
Lifting & lowering  
Mast reach  
Fork tilting  
Side shifter
- Multi-function touch display
- Forward & backward button



### Multi-function Touch Display

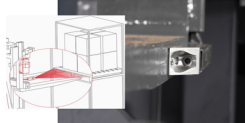
- 4 different driving speed mode  
M1: 7 km/h M2: 8km/h  
M3: 9km/h M4: 10km/h
- Battery display indicator & working hour display
- Travel forward/backward control
- LED light control
- Horn control
- Steering angle control
- 180°/360° one click switch
- Camera display

### Fork camera

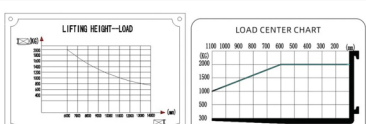
The camera system is equipped with a fork camera, which has a better field of vision when loading and unloading goods, and there is no effect of being blocked by the pallet

The camera is made of stainless steel with IP69 and shockproof grade of 10G

Not afraid of bumps



## DIMENSION DRAWING :



Model	CQD20 (lift height :9.5M)	CQD20 (lift height :9.5M)
Drive: electric (Battery type: mains...), diesel, petrol, fuel gas	Electric	Electric
Operator type: hand, pedestrian, standing, seated, order-picker	Seated	Seated
Rated capacity/load	Q (kg)	2000
Load centre distance	c (mm)	600
Load distance, centre of drive axle to fork	x (mm)	377
Wheelbase	y (mm)	1510
Service weight	kg	3605
Axle loading, unladen, front/rear	kg	2245/1360
Axle loading, fork advanced, laden, front/rear	kg	727/4678
Axle loading, fork retracted, laden, front/rear	kg	2030/3575
Tires: solid rubber, superelastic, pneumatic, polyurethane		Polyurethane
Tyre size, front	mm	Φ343×140
Tyre size, rear	mm	Φ340×114
Additional wheels (dimensions)	mm	-
Wheels, number front/rear (x = driven wheel)		1x/2
Tread, front	b10 (mm)	-
Tread, rear	b11 (mm)	1146
Tilt of mast/fork carriage forward/backward	α/β (°)	3/4
Height, mast lowered	h1 (mm)	2340
Free lift	h2 (mm)	1400
Lift	h3 (mm)	5000
Height, mast extended	h4 (mm)	5940
Height of overhead guard (cab)	h6 (mm)	2210
Overall length	l1 (mm)	2466
Length to face of forks	l2 (mm)	1396
Overall width	b1/b2 (mm)	1275/1260
Fork dimensions DIN ISO 2331	s / e / l (mm)	40/120/1070
Fork carriage (ISO 2328, class/type A, B)		28
Fork carriage width	b3 (mm)	528
Fork spread	b5 (mm)	708
Distance between wheel arms/loading surfaces	b4 (mm)	900
Reach distance	h4 (mm)	600
Ground clearance, laden, below mast	m1 (mm)	70
Aisle width for pallets 1000 × 1200 crossways	Aa1 (mm)	2849
Aisle width for pallets 800 × 1200 lengthways	Aa2 (mm)	2899
Turning radius	Wa (mm)	1783
Length across wheel arms	l7 (mm)	1960
Travel speed, laden/unladen	km/h	10.5/11
Lift speed, laden/unladen	m/s	0.29/0.45
Lowering speed, laden/unladen	m/s	0.5/0.56
Reaching speed, laden/unladen	m/s	0.12/0.12
Max. gradeability, laden/unladen	%	10/10
Service brake		Electromagnetic
Drive motor rating 52-60 min	kW	6.5/6A3
Lift motor rating at 53-15%	kW	8.2/6A3
Battery according to DIN 43531/35/36 A, B, C, no		-
Battery voltage/nominal capacity X5	V/9(Ah) or kWh	48/500
Battery weight	kg	870
Sound pressure level at the driver's seat	dB (A)	65

### Mast Table

Max.Lift Height	Height, mast lowered	Free lift (with overhead guard)	Height, mast extended
h3(mm)	h1(mm)	h2(mm)	h4(mm)
3000	2240	0	3940
3500	2490	0	4440
4000	2740	0	4940
5000	2740	1430	5940
6250	2740	1800	7140
7400	3190	2250	8340
8000	3390	2450	8940
8600	3590	2650	9540
9500	3890	2950	10440
10200	4190	3250	11140
11100	4490	3550	12040
12000	4790	3850	12940
12500	4966	4016	13440
13000	5236	4286	13940
14000	5556	4616	14940